

CONQUER

In-Line Fuse Holder

CONQUER In-Line Fuse Holders Are Easy Removal And Adopted For Varies Of Circuits Applications, Easy To Inspect And Change Fuses. The Waterproof Feature For Exposed Locations And Harsh Environments.

Specification Guide Codes:

A = Item Number

B = Rated Current

C = Insulation Resistance At 500 V DC

• **Contact** : Brass, Tin / Nickel Plated

• With Other Wire Size Or Lengths Available On Special Order.

• To Install Fuses With "Loop" Type Wires, Simply Cut Loop Into Two Separate Wires Of Desired Length.

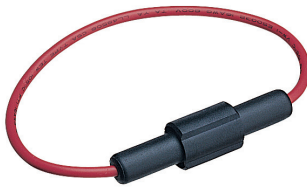
D = Contact Resistance

E = Dielectric Strength For 60 Seconds

F = Body Material

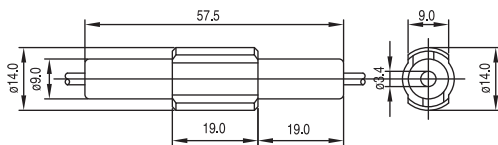
G = Supply Standard UL Wire-AWG/Length

IN-LINE FUSE HOLDER FOR 5 x 20mm FUSE



CQ-219D

B: 6.3A
C: 100MΩ Min
D: 5mΩ At 1A DC
E: AC2000V Min.
F: Thermoplastic
G: 20#AWG / 8"Loop
Interlock Type

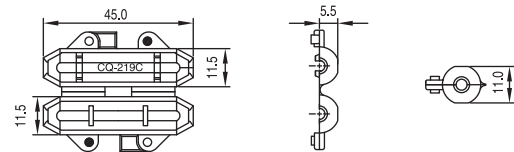


HOT



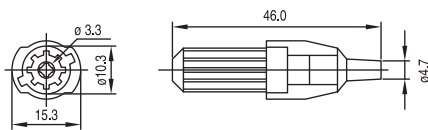
CQ-219C RoHS

B: 15A
C: 100MΩ Min
D: 5mΩ At 1A DC
E: AC1500V Min.
F: Nylon
G: 16#AWG / 8"Loop
Hinged Body Type



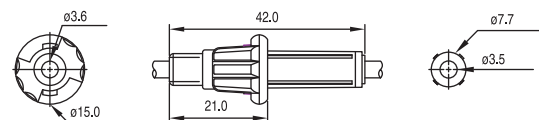
CQ-219N RoHS

B: 10A
C: 100MΩ Min
D: 5mΩ At 1A DC
E: AC1500V Min.
F: Nylon
G: 18#AWG / 8"Loop
Bayonet Type



CQ-219P RoHS

B: 10A
C: 100MΩ Min
D: 5mΩ At 1A DC
E: AC1500V Min.
F: Nylon
G: 18#AWG / 8"Loop
Bayonet Type



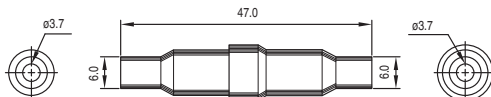
IN-LINE FUSE HOLDER



CQ-520B

RoHS

B: 15A
C: 100MΩ Min
D: 5mΩ At 1A DC
E: AC2000V Min.
F: Bakelite
G: 16#AWG / 8"Loop
Screw Type



CQ-632B RoHS

78

B: 15A
C: 100MΩ Min
D: 5mΩ At 1A DC
E: AC2000V Min.
F: Bakelite
G: 16#AWG / 8"Loop
Screw Type
 In-Line Fuse Holder For
 1/4"x1-1/4 Fuses

